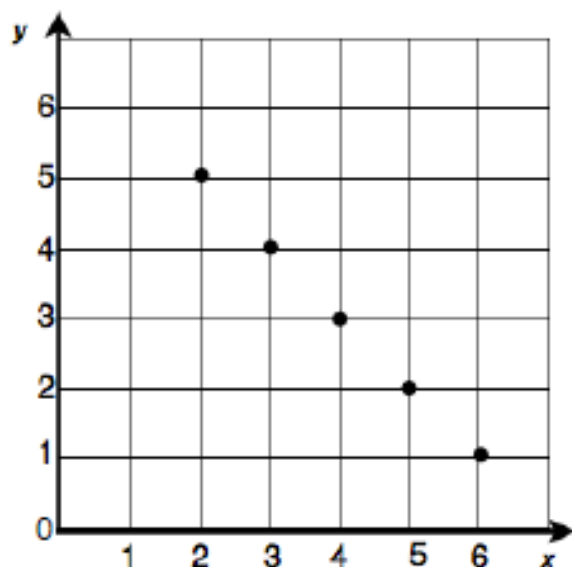


1. Sarah plotted 5 points on a grid. The points were all in a straight line. If she plots another point on the line, what could be its coordinates?

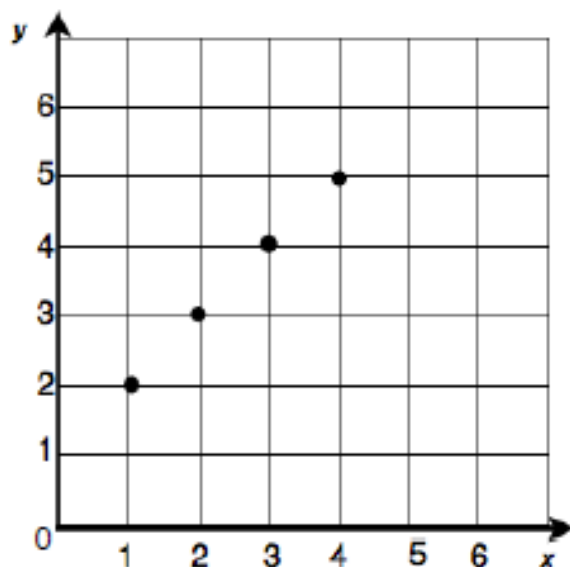
- A. (1,6)
- B. (6,1)
- C. (1,5)
- D. (0,6)



Ordered Pairs

2. Lamar plotted 4 points on a grid. The points were all in a straight line. If he plots another point on the line, what could be its coordinates?

- A. (1,3)
- B. (0,2)
- C. (5,6)
- D. (6,5)



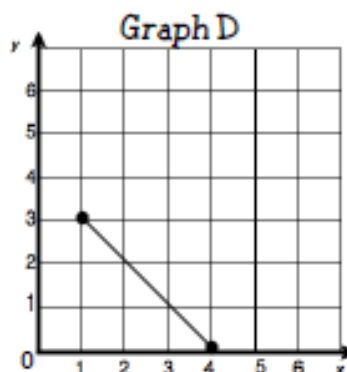
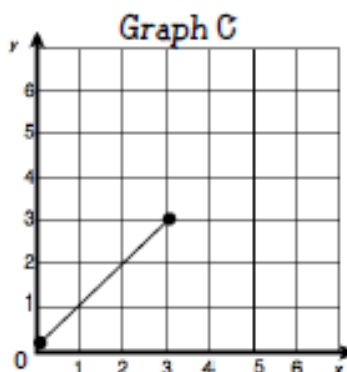
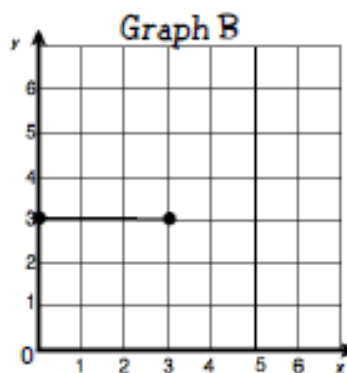
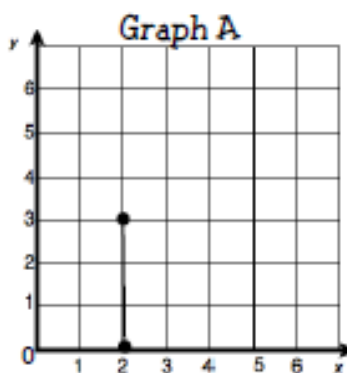
Ordered Pairs

3. The table shows points on a line segment. Which graph shows the line segment plotted?

x	y
0	3
1	3
2	3
3	3

- A. Graph A
- B. Graph B
- C. Graph C
- D. Graph D

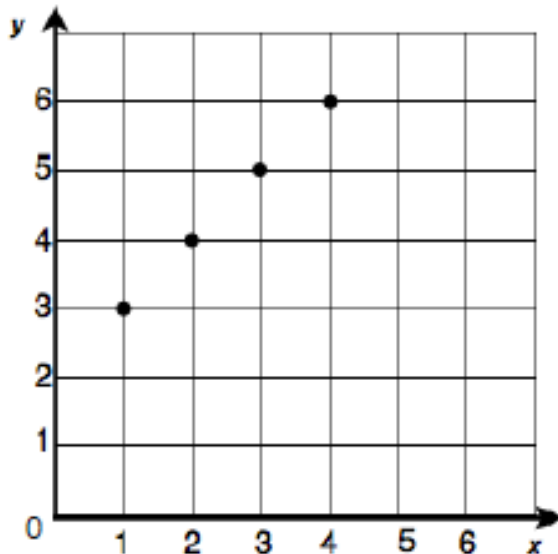
Ordered Pairs



B

4. Mario plotted 4 points on a grid. The four points were all on the same line. If he plots another point on the line, what could be its coordinates?

- A. (4,5)
- B. (6,7)
- C. (5,4)
- D. (0,2)



Ordered Pairs

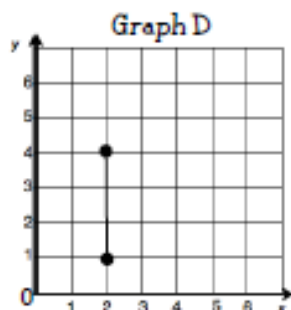
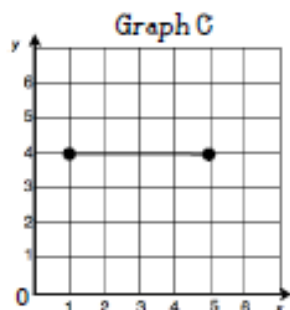
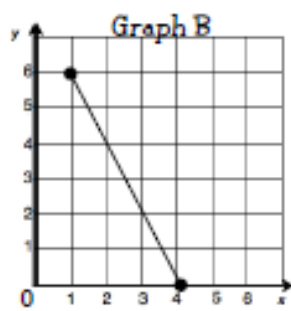
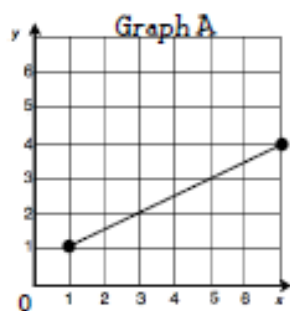
D

5. The table shows points on a line segment. Which graph shows the line segment plotted?

x	y
2	1
2	2
2	3
2	4

- A. Graph A
- B. Graph B
- C. Graph C
- D. Graph D

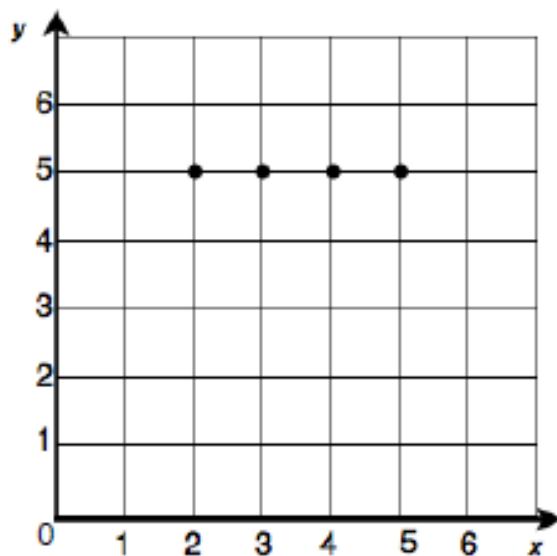
Ordered Pairs



D

6. Jamie plotted 4 points on a grid. The 4 points were all on the same line. If he plots another point on the line, what could be its coordinates?

- A. (2,5)
- B. (6,6)
- C. (6,3)
- D. (1,5)

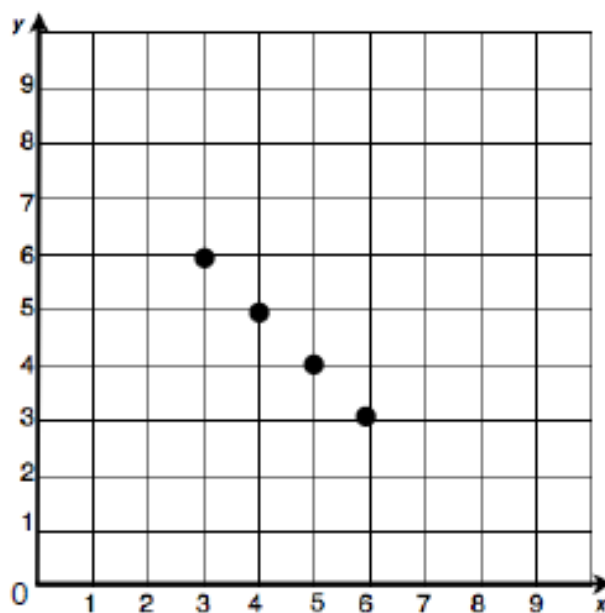


Ordered Pairs

D

7. Diego plotted 4 points on a grid. The 4 points were all on the same line. If he plots another point on the line, what could be its coordinates?

- A) (7,2)
- B. (3,7)
- C. (1,7)
- D. (2,8)

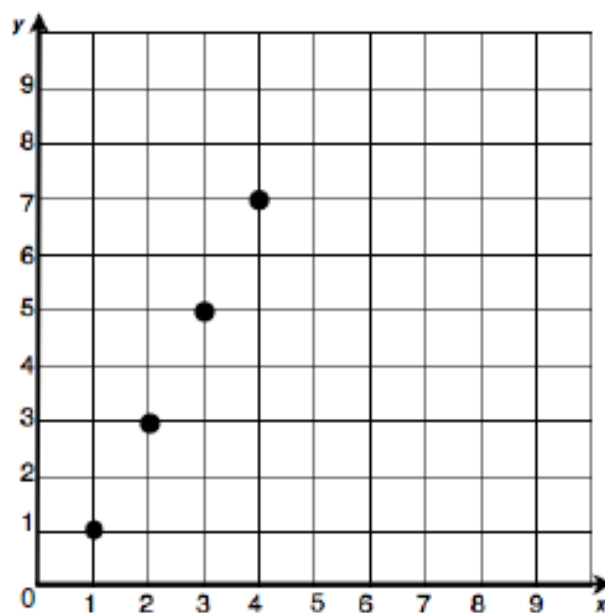


Ordered Pairs

A

8. Emma plotted 4 points on a grid. The 4 points were all on the same line. If she plots another point on the line, what could be its coordinates?

- A. (5,7)
- B. (5,9)
- C. (0,1)
- D. (6,8)

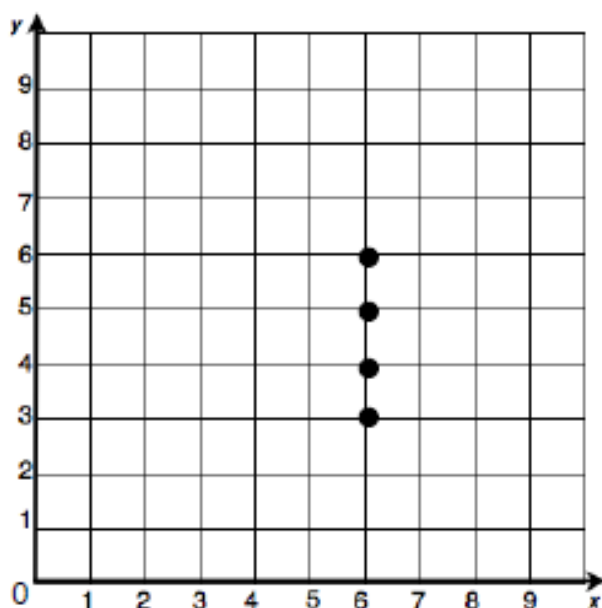


Ordered Pairs

B

9. James plotted 4 points on a grid. The 4 points were all on the same line. If he plots another point on the line, what could be its coordinates?

- A. (5,5)
- B. (7,6)
- C. (4,6)
- D. (6,2)

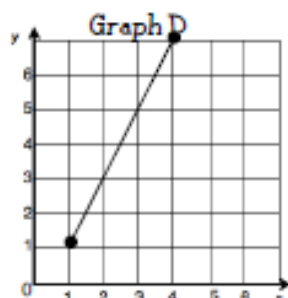
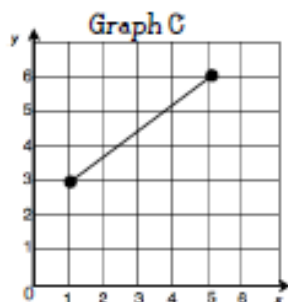
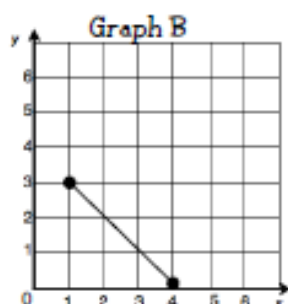
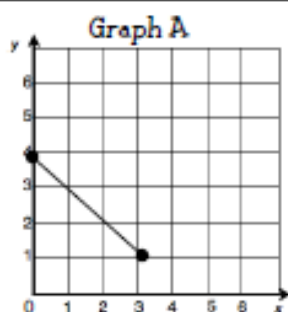


Ordered Pairs

D

10. The table shows points on a line segment. Which graph shows the line segment plotted?

x	y
0	4
1	3
2	2
3	1



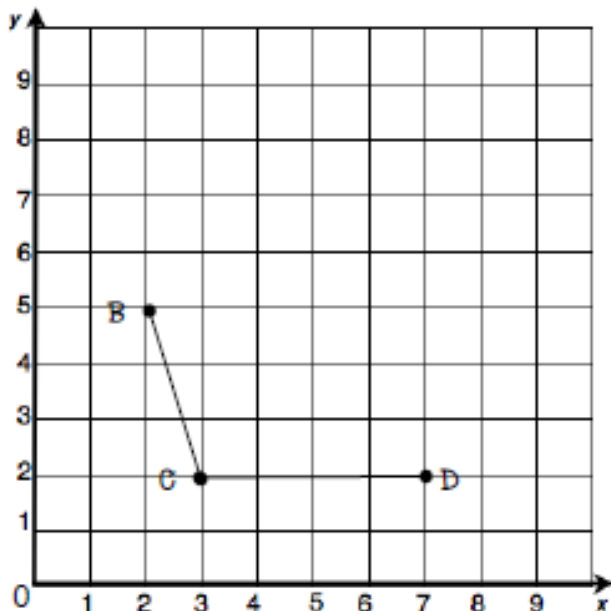
- A. Graph A
- B. Graph B
- C. Graph C
- D. Graph D

Ordered Pairs

A

11. ABCD is a parallelogram. What are the coordinates of A?

- A) (5,5)
- B. (6,5)
- C. (7,5)
- D. (5,6)

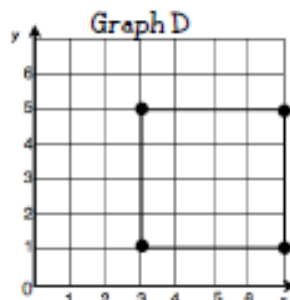
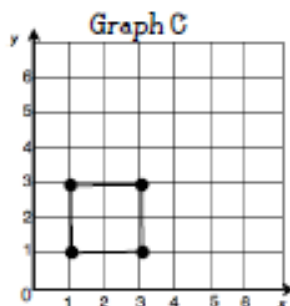
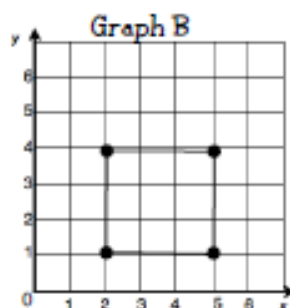
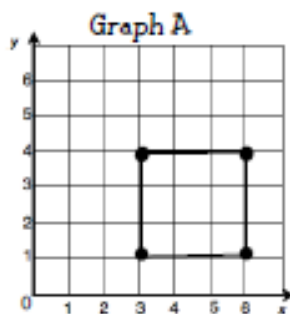


Ordered Pairs

B

12. Which graph shows the square with vertices (3,1), (3,4), (6,1) and (6,4)?

- A. Graph A
- B. Graph B
- C. Graph C
- D. Graph D

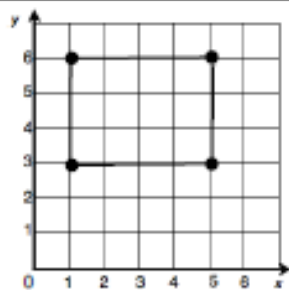


Ordered Pairs

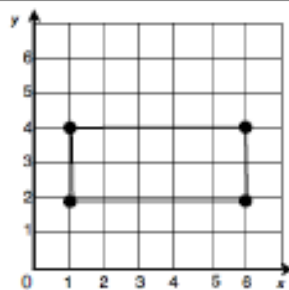
A

13. Which graph shows a rectangle with the coordinates $(2,2)$, $(6,5)$, $(6,2)$ and $(2,5)$?

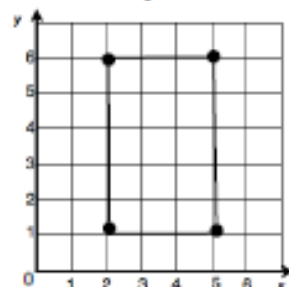
- A. Graph 1
- B. Graph 2
- C. Graph 3
- D. Graph 4



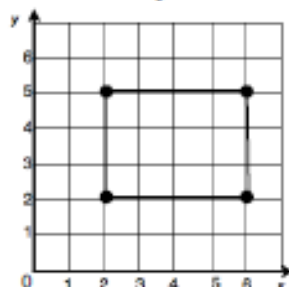
Graph 1



Graph 2



Graph 3



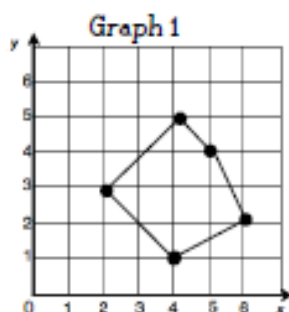
Graph 4

Ordered Pairs

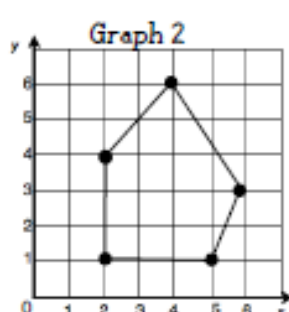
D

14. Which graph shows a pentagon with the coordinates $(4,2)$, $(1,4)$, $(2,1)$, $(6,4)$ and $(4,5)$?

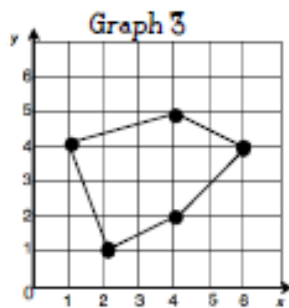
- A. Graph 1
- B. Graph 2
- C. Graph 3
- D. Graph 4



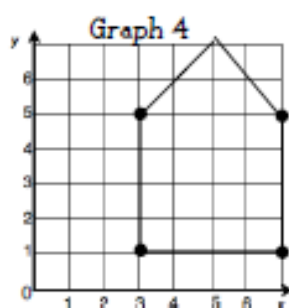
Graph 1



Graph 2



Graph 3



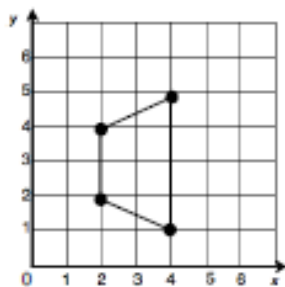
Graph 4

Ordered Pairs

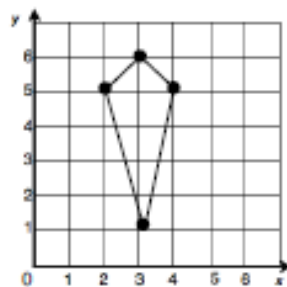
C

15. Zahmia plots the points $(4,5)$, $(3,1)$, $(3,6)$ and $(2,5)$. After connecting the points, which figure did she draw?

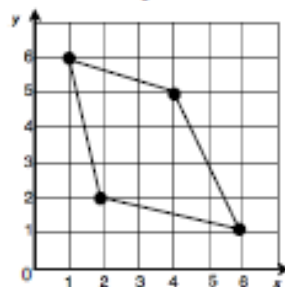
- A. Graph 1
- B. Graph 2
- C. Graph 3
- D. Graph 4



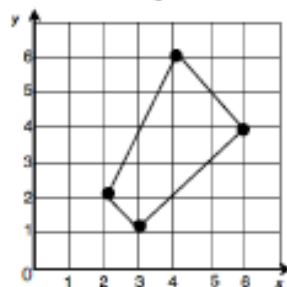
Graph 1



Graph 2



Graph 3



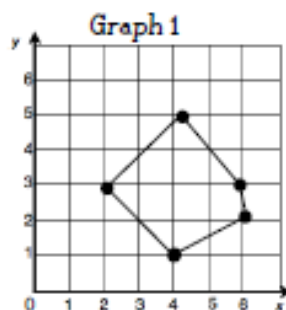
Graph 4

Ordered Pairs

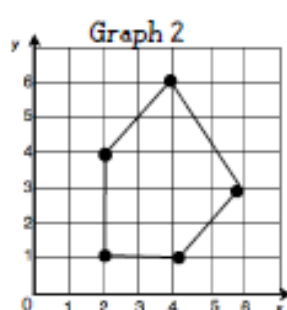
B

16. Which graph shows a trapezoid with the coordinates $(2,5)$, $(1,3)$, $(6,3)$ and $(4,5)$?

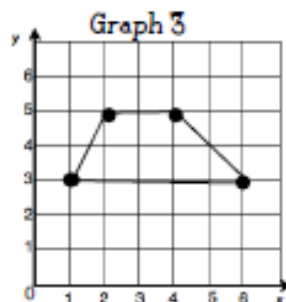
- A. Graph 1
- B. Graph 2
- C. Graph 3
- D. Graph 4



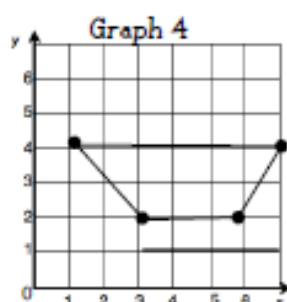
Graph 1



Graph 2



Graph 3



Graph 4

Ordered Pairs

C

Ordered Pairs - Task Cards
Answer KEY

1 A	2 C	3 B
4 D	5 D	6 D
7 A	8 B	9 D
10 A	11 B	12 A
13 D	14 C	15 B
16 C	17 D	18 A